



# ANNUAL REPORT FY21

10/1/20 - 9/30/21

## Art Elevates the Everyday

On behalf of the board and staff of the Wiregrass Museum of Art, we are pleased to present the Fiscal Year 2021 Annual Report, with highlights of the museum's work from October 2020 to September 2021.

Here, you'll read how WMA provided meaningful art experiences for area residents and visitors over the last year, including a return to in-person programs and events despite the ongoing challenges of serving the public during a pandemic. Our impacts in artist support, art education, cultural sharing, and community development were strengthened by our adaptable team, faithful volunteers, and our many partnerships.

This work is generously supported by individuals in our community, and those in corporate, government, and foundation sectors. Each gift advances the museum's mission and builds a more creative, connected future for our region, and we thank you for your support.

**Dana-Marie Lemmer**  
*Executive Director and Curator*

**Collins Trott**  
*President of the Board of Trustees*

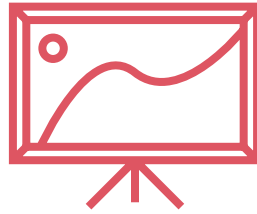
# WMA BY THE NUMBERS

---



**19**

**VISUAL ARTISTS IN  
TEMPORARY EXHIBITIONS**



**34**

**ART AND ARTIST  
VIDEOS CREATED**



**17**

**GRANTS AWARDED**

---



**10**

**PREK-12 VIRTUAL TOURS**



**13**

**OUTREACH PARTNERS**



**118K**

**REACHED ON SOCIAL MEDIA**

---



**2**

**ARTIST RESIDENCIES**



**20**

**CORPORATE MEMBERS**



**2,503**

**ART KITS DISTRIBUTED**

# ARTIST ACTIVATED, AUDIENCE ENGAGED

WMA is widely recognized by the Alabama artist community for its willingness to support artists' experimentation, studio practice, and innovative programming ideas. This style of close partnership creates opportunities for residents in the Wiregrass community to learn directly from artists, and provides crucial creative and financial support to help advance artists' careers.

In both virtual and in-person formats, WMA produced 13 Visiting Artist Series programs over the year, providing access to hands-on instruction from professional artists, and diverse, unique offerings unlike classes that are readily available in commercial settings. Artist workshops built greater levels of creativity, self-expression, artistic skill, and technical understanding for residents, and created environments online and in the museum's studio in which people could find meaningful social connection -- equally important and needed in an era of reconnection.



Museum staff and collaborators also worked with artists to create high-quality videos and audio tours with artists featured in exhibitions; these were made available on the museum's free, digital app, YouTube, and social media. The interpretation of these objects through first-hand stories and commentary from the artists created a richer experience for daily visitors who used these resources in the galleries, and stands as valuable oral history documentation.



WMA worked to connect artists from Sloss Metal Arts (Birmingham, Ala.) with more Wiregrass residents by collaborating with Landmark Park, Alabama's state agricultural museum. WMA covered artist stipends, travel and lodging costs for the artists to stay and work in the Wiregrass, and Landmark Park partnered with WMA by providing

workspace and joint program promotion. 150 residents attended a live iron pour demonstration and workshop on February 27, 2021, and 5 artists were supported in this short-term residency. This program helped to draw new audiences to WMA to see *Pattern and Void*, an exhibition of works from artists



with Sloss Metal Arts on view at the museum from January to July 2021, and provided opportunities for residents to learn about Alabama's cultural heritage and traditions, past and present, directly from the artists.

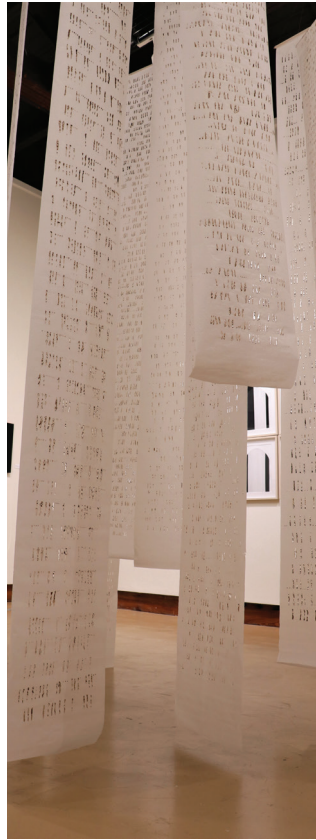
The second artist residency was with artist Jared Ragland, whose time with WMA focused on his ongoing body of work, *What Has Been Will Be Again*. Over the course of a year-long road trip across the state, Ragland has poetically explored the complexities of his home state by documenting sites of historical significance and generational injustice. WMA's support for this project allowed Ragland to travel within Alabama, documenting and producing a subset of new works, which will be published digitally on a standalone website hosted by WMA in Winter 2022. This work will be of long-term benefit to Alabama's residents, through photographic documentation of its people and places. WMA's portion of the residency focused on his documentation of historical sites around the Wiregrass.

Short-term residencies provided consistent visibility in public spaces across the Wiregrass region as we plan for a future, permanent artist residency program that will attract artists from across the U.S. to live and work in Dothan, Alabama.



- **Top Right:** Visiting artist Butch Anthony creates metal sculpture at workshop for kids.
- **Left:** Exhibiting artist Yvonne Wells records audio stories describing her quilt *Sewing Patriotism* on exhibition at WMA.
- **Bottom Left:** Sloss Metal artists pour molten iron into molds at artist demonstration and workshop.
- **Bottom Right:** Artist Olivia Hill teaches workshop participants punch hooking techniques in WMA's Studio.

# A YEAR OF ART



## **Selections from the Permanent Collection**

Ongoing

## **Semiotic Compass**

Ongoing

## **Sara Garden Armstrong: Threads and Layers**

October 16 - December 21, 2020

## **Pattern and Void**

January 22 - June 26, 2021

## **Youth Art Month**

March 3 - 31, 2021

## **Helen Keller Art Show of Alabama - 2021**

April 7 - May 22, 2021

## **Between Heaven and Earth**

April 16 - June 26, 2021

## **Path of Entry**

April 16 - June 26, 2021

## **For Keeps: Selections from the Permanent Collection**

July 16 - September 25, 2021

## **Self-Taught**

July 16 - September 25, 2021

## **Alice Mason: Prints from the Permanent Collection**

July 16 - December 31, 2021

## **Nice Work If You Can Get It**

July 16 - December 31, 2021



“Personally, the pandemic has brought artistic challenges, growth, and much needed time to ground and re-center. The collection of grief, frustration, and anger I felt was also accompanied by hope, experimentation, and a few studio accomplishments ... Thanks to the Wiregrass Museum of Art, the Alabama Public Television Monograph team came across my work and became interested in my creative process, with a video feature forthcoming. Between Heaven and Earth at WMA was also featured in Burnaway, a regional arts publication based in Atlanta.”

- Chintia Kirana, WMA exhibiting artist

- **Top Left:** Alabama artist Cal Breed's glass work *Pulse* stands in the foreground of WMA's Main Gallery
- **Top Right:** "The Intersection 2", installation of feathers by artist Hyomin Kwon in *Path of Entry* exhibition
- **Middle Left:** Gallery view of Sara Garden Armstrong: *Threads and Layers*
- **Middle Right:** Hanging installation by exhibiting artist Chintia Kirana in *Between Heaven and Earth*
- **Bottom Left:** Metalwork exhibited in *Pattern and Void*, a group show with Sloss Metal Arts
- **Bottom Right:** Eclectic works from a private Alabama collection exhibited in *Nice Work If You Can Get It*

# CARING FOR WMA'S COLLECTIONS

WMA stewards the art in its care with future generations in mind, preserving and conserving it as a learning resource and a direct link to understanding our own cultural heritage. This year, WMA gave special focus to objects in



its Permanent Collection in exhibitions and videos with artists, focusing on well-loved objects that inspire a sense of belonging and ownership with area residents. With support from The Henry Luce Foundation, WMA continued its ongoing work in collections care, by framing and exhibiting rarely displayed prints by

artist Alice Mason, and by exhibiting vernacular and contemporary art from internationally recognized artists. The museum also acquired several works of art for its Permanent Collection and Education Collection, listed below.

WMA also launched a new initiative to make its Permanent Collection more accessible for its visitors. Labels for Permanent Collection objects, located in its Entrance Galleries and on long term display, added interpreted text in Spanish, and have provided photos of the artists whose works are displayed. These labels allow visitors and residents whose primary language is Spanish to experience the artworks' interpretive and contextual information in a clear and direct way. WMA partnered with local Spanish language professional Patricia DeVane to translate and interpret the labels.

## ACQUISITIONS

Sara Garden Armstrong, *Layered Earth 11*, 2016, Acrylic and pigmented fiber on canvas. Gift of the artist.

Amy Cutler, *Kayayo*, 2011, lithograph print. Gifted by Paul Barrett.

Dale Kennington, Five early works, *untitled*, 1960s. Gift of Ben Garrett.



- Left: Amy Cutler, *Kayayo*
- Right: Sara Garden Armstrong

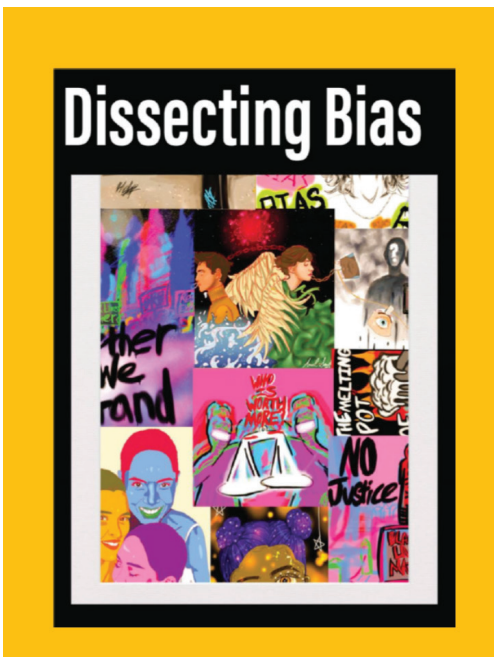
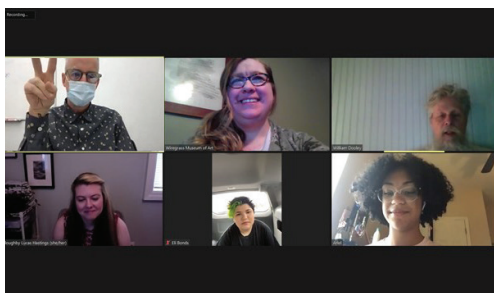
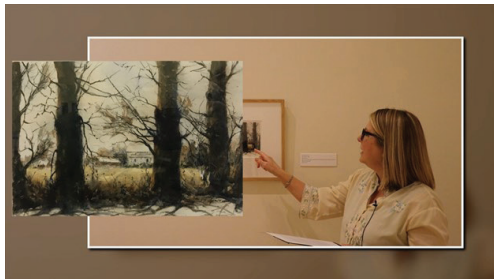
## THE MICHAEL L. OWEN MEMORIAL VAULT



WMA's Board of Trustees paid tribute to its President, Mike Owen, after his untimely passing in July 2021. Mike was a champion for the museum's mission within his wide circle of family, friends, and colleagues, a strong advocate for WMA's role in the Wiregrass, and loved the work of self taught artists from Alabama. The museum's Board of Trustees adopted the designation of The Michael L. Owen Memorial Vault for its current and future art vaults, in perpetuity. Additionally, the museum acquired a metal sculpture by Alabama artist Charlie Lucas in his memory.

- Image: Charlie Lucas, *Trojan Horse*, circa mid 1980s, mixed media, wire. Museum purchase in memory of Michael L. Owen, WMA board president, 2019-21.

# EDUCATION



WMA is a strong partner to area school systems, and a resource for arts education for learners of all ages. In the 2020-21 school year, the museum offered transitional resources for preK-12 students and educators while field trips were on a COVID-related hiatus. Museum staff and docents created virtual tours in the galleries, through free videos that explored some of the works in the museum's permanent collection and works from previous exhibitions. Virtual tours are in 15-minute segments as an asynchronous experience that teachers can incorporate into their classrooms or assign for students to complete in their own time; these resources are available at [wiregrassmuseum.org/virtual-tours/](https://www.wiregrassmuseum.org/virtual-tours/).

WMA also provided professional development to educators at Dothan City Schools, linking strategies for learning through the arts with teachers' classroom goals and the museum's resources. The museum remains a strong partner to its area school systems and works closely with educators to understand and fill gaps in individual schools' curriculum needs.

2021's Out of the (Art) Box high school student program at WMA transitioned into a new format. This program has seen changes over the years, originating as a 48-hour, overnight installation competition, to a multi-day competition. 2021's program created an opportunity for another stage in the evolution of Out of the (Art) Box, working within a virtual format with a small group. Two area high school students and three artist mentors collaborated to create a space for significant dialogue on the social practice of art; artists Douglast Baulos, William Dooley, and Willoughby Hastings mentored students Ariel Smith and Eli Bonds. Students met with each other, and with the artists at virtual meetings, and decided to research, create art, and make a zine for the public on the issue of bias. Students created a print zine, "Dissecting Bias", available at the museum's shop and in select locations.

Despite the challenges of this year's program due to COVID, WMA had the opportunity to adjust its teen-focused programming to better serve high school students. Out of the (Art) Box will retire as an annual program, with WMA Teens replacing it, beginning in October 2021. WMA Teens is an annually rotating group of selected applicant junior and senior students who create programs and events for teens by teens. During their time at WMA, they hone their time and budget management skills, while learning how to create and implement public programs from artists and museum staff.

WMA created and distributed a total of 2,503 art kits through various partners within Dothan and the larger Wiregrass region, through summer outreach programs and a takeaway format of First Saturday Family Day. Each kit contained step-by-step lessons and high-quality supplies for artmaking, created to be adapted for any age and with enough resources to be used for multiple projects. The high number and range of our partnerships listed below shows both the museum's capacity to connect people through art, and the high level of needs/requests from area organizations whose own capacities are diminished during the COVID-19 pandemic. Art kits were well received by students, who learned about self-expression through paper sculpture, watercolor, mixed media collage, painting, drawing, all while exploring interdisciplinary subjects within the lessons. Kits also directed students and their families to WMA's online resources and lesson plans which are free throughout the year. Participating students and individuals are often from low-income backgrounds, or have limited access to arts and culture experiences; these kits were a rich learning resource, and provided a safe creative outlet for lifelong learners of all ages.

WMA also worked directly with leadership at the Hawk-Houston Youth Enrichment Center to provide in-person art camps at the center's facilities this summer. This

# EDUCATION (CONT.)

**“This year, I am struck by the reach of these kits, particularly via distance, like groups in Eufaula, and age, from toddlers at Dothan Housing Authority to adults at Rose Hill Senior Center. We also provide for groups that use the kits for part of their therapeutic practice, like Vaughn Blumberg and Alabama Head Injury Foundation.”**

**- Brook McGinnis, WMA Education Director**

partnership and yearly outreach has built a strong relationship between the two organizations, and provides opportunities for the center’s students to experience a sense of belonging and close connection with the museum. It also helps WMA stay connected to the needs of the community located in its nearby neighborhoods. Over six weeks in July and August, WMA Director of Education Brook McGinnis, along with museum volunteers, taught a hands-on summer camp with 35 students at Hawk-Houston Youth Enrichment Center. Each week’s session was two hours long and explored various mediums and techniques, focusing students’ activities on learning more about themselves and the world around them through art.

## SUMMER OUTREACH PARTNERS 2021

- |   |  |
|---|--|
| Dothan City Schools Summer Reading Academy        | Boys and Girls Club of Southeast Alabama/Ozark |
| Hawk Houston Youth Enrichment Center              | Fort Rucker School Age Center                  |
| Eufaula City Schools 21st Century Learning Center | The Harbor                                     |
| City of Dothan Leisure Services                   | Vaughn Blumberg                                |
| Boys and Girls Club of the Wiregrass              | Alabama Head Injury Foundation                 |
|   | Dothan Housing Authority                       |
|   | Evergreen Presbyterian Summer Camp             |



## 2,503 ART KITS

distributed through summer outreach partners and First Saturday Family Day



# CONNECTION THROUGH ART

---

Several programs continued in a virtual format at the beginning of this year, including The Art of Yoga, and Write Night. Social media live streaming and Zoom meetups provided space for area residents to share in both meditative and invigorating creative activities. Write Night transitioned back into a safe in-person format, and continues as a popular program for area creatives to meet other like-minded individuals while sharing their original works or readings.

The museum's annual member party, One Night Only, was the first in person event to return at WMA on May 6, 2021. This year's iteration of the annual theme invited members to enjoy an outdoor sunset picnic in the museum's garden. Plein air painting, al fresco dining and drinks, and a special appearance from a quartet with the Tri-State Community Orchestra created a golden hour environment for members to reconnect and create art, visit exhibitions in the galleries, and enjoy

the garden; over 100 members attended One Night Only in 2021. Art After Hours also returned during the summer months, and became a monthly offering on each Third Thursday. WMA added live music and additional artmaking stations to the event's format, featuring various singer/songwriters from the region each month and opportunities to experience the museum in extended evening hours.







## AWARDS & RECOGNITION

This year, WMA's work was recognized by its peers within the arts, culture, and museum fields. The museum received a Gold award in the Southeastern Museums Conference Technology Competition for its House Party for Art campaign, its virtual art, music, and tech festival in summer 2020. Over 2,700 viewers from Alabama, Arkansas, Arizona, California, Florida, Georgia, Louisiana, District of Columbia, and North Carolina joined in for the virtual festival, which is archived at [www.housepartyforart.com](http://www.housepartyforart.com).

"Semiotic Compass," a large, outdoor, functional sculpture installation in the museum's garden, was presented with a Honorable Mention Design Award to Bradley & Schmidt Architecture from the American Institute of Architects Alabama Conference on Architecture. Its unique design is inspired by concepts of earnest communication, storytelling, and a sense of geographic belonging, and spurs conversation both at the installation site and among the local and regional community. WMA commissioned "Semiotic Compass," which was designed by architect Jason Schmidt, with collaboration from designer Mike Riddle of Push Crank Press.

Exhibition announcements and news from WMA were consistently featured in Burnaway, an Atlanta-based digital magazine of contemporary art and criticism from the American South, including a significant review of *Between Heaven and Earth*, a solo exhibition of work from Chintia Kirana.

WMA also worked to advance its commitment to inclusion, diversity, equity, and access in the arts through staff and board professional development, and the creation of a Community Advisory Committee. The museum invited residents of the Wiregrass region to become more involved and invested in the museum's work and impact, in order to deepen its understanding of its



community's needs through authentic conversation and participation, and to infuse its day-to-day operations and strategic planning with responses to these conversations. The first cohort of committee members includes Lisa Ennis, Erika Faulk, Amanda Gomez, Alison Hall, Katy Lewis, Phillip Metcalf, Claire Necessary, Calencia Perry, Derrick Tiller, Mikhele Trice, and Keith Wilson. Each committee member volunteers their time, meeting quarterly for working sessions at the museum, and has committed to a 1-2 year term.

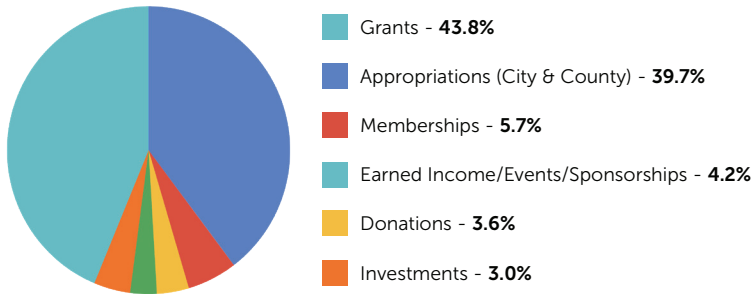
# FY21 FINANCIAL INFORMATION

WMA is supported by diverse areas of income to sustain its annual operating expenses. Contributed income includes annual appropriations from the City of Dothan (\$242,500), Houston County Commission (\$10,000), as well as household and corporate memberships (\$36,246.50), and donations (\$22,824.08). Other areas of contributed income include event/exhibition sponsorships (\$4,250) and grants (\$230,438). Major grant contributors for this fiscal year were The Daniel Foundation of Alabama, the Michelin Charity Golf Tournament, The Henry Luce Foundation, and the Elizabeth Firestone Graham Foundation.

Earned income includes special events like the museum's annual member party, workshops and classes, rentals, and merchandise and beverage sales. During this fiscal year, WMA's opportunities for in-person events were limited because of the COVID-19 pandemic, but the museum pivoted its regular offerings to provide safe gatherings, like Art After Hours and small group experiences at The Green Leaf. 42% of earned income for this fiscal year came from workshops and classes.

## WMA Funding Sources for Fiscal Year 2021

Appropriations (City & County)	\$252,500
Memberships	\$36,426.5
Donations	\$22,824.08
Investments	\$19,245.75
Earned Income/Events/Sponsorships	\$26,636
Grants	\$278,287



## Income and Other Support

Earned Income	\$18,136.43
Contributed Income	\$546,483.58
Payroll Protection Program	\$47,849.00
Investments Income	\$19,245.75

**Total Income** \$631,714.76

**Operating Expenses** \$549,052.26

---

**Net Income** \$82,662.49



## MORE INFO

For detailed information from WMA's annual financial statements, visit [wiregrassmuseum.org/about](http://wiregrassmuseum.org/about). The annual audit will be published in early Spring 2022.



# GRANT AWARDS AND FOUNDATION SUPPORT

---

- **Alabama Arts License Tag Fund** - \$2,000 for youth art education programs
- **Alabama State Council on the Arts** - \$24,600 in project grants and relief funding
- **The Caring Foundation (Blue Cross Blue Shield of Alabama)** - \$2,000 for Youth Art Month
- **The Henry Luce Foundation** - \$25,000 for collections-based exhibitions and programs
- **The Elizabeth Firestone Graham Foundation** - \$25,000 for Sydney A. Foster artist residency and exhibition
- **The Daniel Foundation of Alabama** - \$35,000 for operational support
- **Dothan City Schools** - \$30,000 for art education partnership and educator professional development
- **Visit Dothan** - \$4,000 to support an area attraction
- **Michelin Charity Golf Tournament** - \$33,000 for operational support
- **Publix Super Markets Charities** - \$1,000 for Youth Art Month
- **State of Alabama CARES Nonprofit Grant** - \$15,000 for operational support
- **Walmart Foundation** - \$500 for First Saturday Family Day
- **Wiregrass Foundation** - \$19,296 for summer outreach programs and COVID-adapted First Saturday Family Day



## THE YEAR AHEAD

---

Wiregrass Museum of Art looks forward to a full year of exhibitions, programs, and events in 2022. Our commitment to excellence and professionalism will propel the museum toward success as we work through the Museums Assessment Program with the American Alliance of Museums, a peer-reviewed step in the national accreditation process. This work began in 2021, and has provided the museum with the opportunity to evaluate and strengthen its operations, for greater institutional strength and impact in its community.

Significantly, the year ahead will mark a return to the museum's biennial with *B22: Wiregrass Biennial*, to be held in person in the museum's galleries during the summer quarter. This juried exhibition is a hallmark of the museum's ability to draw interest and participation from emerging and established

artists across the Southeast. As with *B20*, artist fees have been eliminated in order to allow greater access to arts participation from artists from diverse backgrounds.

Special events Yard Party for Art, and the Pumpkin Party and Pumpkin Patch Family Festival will draw familiar and new audiences to experience the museum at fun, welcoming experiences. Artist performances and demonstrations, unique art installations, and one-of-a-kind artmaking offerings will take center stage at these events; regularly occurring events like Watercolor Collective, Write Night, and Art After Hours will continue to create spaces for lifelong learning and connection through art.

# SUPPORT

Diverse, sustainable funding was crucial to WMA's ability to be responsive to the needs of its community this year. Support from The City of Dothan, corporate and individual memberships and donations, combined with grants and multi-year giving agreements created a foundation for the

museum to provide high-quality programs and resources in answer to the great need for art education and public programs, artist support and exhibitions, and cultural sharing.



## Corporate Members

### Benefactor

AAA Cooper Transportation

### Patron

CDG Engineers & Associates, Inc.  
ServisFirst Bank

### Supporter

Coleman Allied  
DSI Security  
Hall's Milling Company  
LBA Hospitality  
RealTime, LLC  
Slingluff United Insurance  
Sunset Memorial Park

### Friend

Bob Woodall Air Care Systems  
Gosselin Architecture  
MidSouth Bank  
Mural City Coffee Company  
PREmployer  
Windmill Station  
Wiregrass Home Team

### In Kind

Push Crank Press  
Troy Public Radio  
WTVY-TV

## Donations

### Gifts of \$1,000+

Robert and Carol Flowers  
Ann and Whit Huskey  
Tanya and Lawrence Newton  
Sue and Larry Register  
Collins and Scott Trott  
Jane Williams

### Gifts of \$500-\$999

Cathy and Dan Denney  
Gulf City Body & Trailer Works  
Juanita Heersink  
Sharla Jones  
Sharon and William Nichols

Push Crank Press  
Felicia Sanders  
Jennifer Scheetz  
Russ Wood, JM Wood Auction Company  
Natalie Woods

### Gifts of \$250-\$499

Peggy Driggers  
Judy Harris  
Mike Herring  
Dana-Marie Lemmer  
Peggy Maki McHenry  
Nancy and Roland Spedale  
David Wade  
Douglas White

### Gifts of \$100-\$249

Barbara Alford  
Sharon and Donnie Beck  
Barb Bondy  
Meagan Dorsey  
Ronna and Larry Dykes  
Dr. William Hood, Jr.  
Joy and Dennis Hunt  
Elaine Johnson  
Laurie and Richard Key  
Jacob Kirpes  
Beverly West Leach and Ed Leach  
Ellen and Paul Lee  
Susan and Alan Livingston  
Nancy and Charles McDaniel  
Barbara and Leon Minsky  
Adam O'Brien  
Nancy Pitman  
Ginger Pratt and TA McGaugh  
Murriel and David Scarborough  
Lynn Schmidt  
Gretchen Schulz  
Janet Shafer  
Irene Silvernail  
Stacy Slavichak and Ed Donahoo  
Liz Smyth  
Angelia and Steven Stokes  
Shirley VanDuzer

### Gifts of \$1-\$99

Susan Anthony  
Stephanie Beckett  
Lacy and Jill Brakefield  
Enriqueta Cano  
Didi and Mike Cody  
Betty Coleman  
Mike Crutchfield

Peggy Driggers  
Jonas Forrester  
Robin Hatcher Gable  
Andy and Lavonda Gosselin  
Maura Hashman  
Katharine Haygood  
Destiny Hosmer  
Linda Jackson  
Kendall Johnson  
Robin Johnston  
Phyllis Kelley  
Larry Kirkland  
Brian Kurlander  
Cynthia Lumpkin  
Daisy and Don McAllister  
Melinda McClendon  
Mikki Thrasher McFatter  
Tim Metcalf  
Robyn Mucci  
Kathleen Myers  
Melissa Sue Ogden  
Linda Parker  
Larry Patrick  
Niki Pierce  
Adrian and Robert Pitre  
Melissa and Anthony Rea  
Bridget Rice  
Jessica Robison  
Becky Taylor Scott  
Carolyn Sealock  
Clay Sellers  
Gloria Sorrells  
Margaret Slingluff  
Billie M. Smith  
Debbie Cates St. John  
Pauline Staffiero  
Sally Stuckey  
Gina Swan  
Deborah Tatum  
Rosalyn Timbie  
Leigh and Vincent Vincent  
Savannah White  
Valerie White

## Memberships

### Advocate

Mary and Marnix Heersink  
Barbara and Paul Flowers

### Benefactor

Jed and Abby Downs  
Grace Lee

# SUPPORT (CONT.)

---

## Patron

Rita and Davis Chapman  
Raba and Will Coggins  
Rachel Davidson  
Chris and Jeff Flowers  
Mike Herring  
Danielle and Justin Hovey  
Ellen and Paul Lee  
Jan and Michael McCann  
Cindi and Michael Ramsey  
Dale and Fred Saliba  
Nancy and Roland Spedale  
Sharon Whittaker

## Supporter

Jane and Jerry Adkinson  
Barbara Alford  
Caroline and David Alford  
Rosemary and Eddie Andrews  
Helen and Nicholas Barreca  
Sharon and Donnie Beck  
Everlie and Scott Bolton  
Cathy and Dan Denney  
Martha Jo Dennison  
Jennifer and Mike Doherty  
Ronna and Larry Dykes  
Ginny and Charlie Canon  
Cynthia and Ben Craven  
Haley Egbert  
Ann and James Ellis  
Sue and Collier Espy  
Georgiana and Greg Faulk  
Jonas Forrester  
Melissa Forrester  
Beverly Frick  
Rebecca Fulmer  
Alison Hall  
Nancy and Ron Harrell  
Judy Harris  
Katharine Haygood  
Dr. William Hood, Jr.  
Joy and Dennis Hunt  
Laurie and Richard Key  
Lara Kosolapoff-Wright and Jerry Wright  
Lori and Edmund Lacour  
Beverly West Leach and Ed Leach  
Barbara and William Liddon  
Susan and Alan Livingston  
Lisa and Gary McGowan  
Holly Meyers  
Amelia Moore  
Anissa and Judson Moore  
Victoria Morin  
Judy Neher  
Kathleen and Greg Rane  
Jennifer Scheetz  
Irene Silvernail  
Margaret Slingluff  
Jeanie and Art Solomon  
Sandra Spengler  
Kathleen Stickler  
Kenneth Thomas  
Rosalyn Timbie  
Jeannie and Theron Wells  
Donna West

## Family

Delores and Paul Angeloff  
Malinda and Richard Baumann  
Lisa Bedsole  
Sandra and Top Bishop  
Kathy and Donald Bowling  
Nicole Bradshaw  
Laura Burnett  
Aimee Burr  
Stephanie and Kevin Butler  
Angie Casey  
Olga Knyaz Casey  
Allison and Ben Chapman  
Linda and John Coffman  
Craig and Florrie Coe  
India and Sean Crutchfield  
Linda Dollar  
Lisa Ennis  
Roxane Fuentes  
Linda Frezell  
Carol and Gary Galbraith  
Holly Gilchrist  
Jamie Haire  
Jenna and Harry Hall  
Joel Harris  
Juanita Heersink  
Kendall and Lawrence Johnson  
Peggy and Benny Jones  
Mary Kathryn and Arthur Kendig  
Mohammad Zeesha Khatri  
Arbie Kincey  
Dee Koza  
Kortney Kropp  
David Lane  
Yongwhan Lee  
Susan Leo  
Brenda and Bil Lindstrom  
Judith Mabry  
Roberta and Ed Marblestone  
Daisy and Don McAllister  
Jennifer and Phillip McCohnell  
Justine McCohnell  
April and Aaron McCreight  
Vanita and Luke McLain  
Elaine McNeal  
Christina and Phillip Metcalf  
Ramona and Lynn Miley  
Katie Miller  
Stacey Mixon  
Cheryl Morrow  
Emily and PJ Muller  
Claire Necessary  
Adam O'Brien  
Cathy and Bob Orr  
Linda and Hugh Overton  
Caleigh Parsons  
Larry Patrick  
James Peterson  
Adrian and Robert Pitre  
Aimee Pybus  
Leanne and Chris Richardson  
Jessica Scarratt  
Orran Scruggs  
Diana Sheridan  
Kendell Shows  
Amith Skandahan  
Patricia Stewart

Brooke Strickland  
Sally and Jim Stuckey  
Luci and Ira Sukoff  
Amanda and Daniel Tew  
Patricia and Robby Thomas  
Jesse Valentine  
Leigh and Vincent Vincent  
Brandi Wallace  
Chris Warren  
Sonia Wartes  
Teresa Williams  
Ashton Wright

## Individual

Karen Arenson  
Samuel Bishop  
Janice Benefield  
Marilyn Bishop  
Mysheleeh Blue  
Laura Burnett  
Lisa Burnham  
Nevin Cherry  
Carolyn Cowper  
Jordan Danford  
Terri Dinwiddie  
Kimberly Dodson  
Beckie Donaldson  
Jennifer Donaldson  
Maggie Dulac  
Sue Dunseth  
Jenny Fine  
Jenny Hansson  
Zac Harris  
Elaine Johnson  
Les Kraut  
Anne Love  
Cynthia Lumpkin  
Rigel Keffer  
Nancy Maloney  
W.J. Mathis  
Kathleen Nemish  
Debora Pettway  
Elsie Prather  
Pamela Rodd  
Teresa Rodriguez  
Judith Seay  
Sue Switzer  
Regina Tedin  
Mark Webster  
Natalie Woods

## Student

Morgan Arneson  
Rachel Beery-Matthews  
Nikita Chapagain  
Anthony Dixon  
Aneesha Ready  
Sam Skipper  
Sophie Skipper  
Brenton Smith

# MISSION + VISION

---

The Wiregrass Museum of Art inspires a lifelong appreciation for the visual arts by providing innovative educational programs that engage diverse audiences through the collection and exhibition

of quality works. As a cultural anchor, the Wiregrass Museum of Art inspires creativity to enhance the everyday lives of its community and leads the regional conversation on the importance of the arts.

## CORE VALUES

### Power of Art / Inspiration / Creativity

We believe in the transformative experience of art and are dedicated to providing our audience with exceptional experiences of direct contact with unique objects and works of art through access to our collections and diverse exhibition schedule. These works of art are at the core of the museum's identity.

### Excellence and Leadership/Professionalism

We believe in treating all visitors and colleagues with respect and will strive for best practices in all we do. Creative expression is central to how we plan, teach, and face adversity.

### Integrity

We believe that we are accountable for the care and preservation of the collections and all objects entrusted to us. We stand for our values in making difficult decisions and will maintain accountability to our donors through good stewardship of donations and generous giving.

### Excellence in Education

We believe in a welcoming environment for all to learn. We will provide life-changing educational experiences through research and direct interactions with visual art. We will encourage lifelong learning and a diverse student body to express new and challenging ideas at every age.

## BOARD OF TRUSTEES

Mike Owen, *President*

Andy Gosselin

Beverly Leach

Dana-Marie Lemmer, *Ex-Officio*

Collins Trott, *Vice President*

Claudia Hall

William Nichols

Mayor Mark Saliba, *Ex-Officio*

Destiny Hosmer, *Secretary*

Judy Harris

Adam O'Brien

Kevin Cowper, *Ex-Officio*

Dan Johnson, *Treasurer*

Whit Huskey

Destiny Oliver

Dr. William P. Hood, Jr., *Emeritus*

Meagan Dorsey

Sharla Jones

Vimal Patel

## STAFF

**Dana-Marie Lemmer**, *Executive Director and Curator*

**Robin Johnston**, *Special Projects Administrator*

**Lara Kosolapoff-Wright**, *Communications Manager*

**Brook McGinnis**, *Education Director*

**Melissa Rea**, *Director of Advancement*

**Sophie Skipper**, *Special Events and Marketing Coordinator*

## SUPPORT

**David Parker**, *Events and Rentals*

**Push Crank Press**, *Design and Web Development*



